

## Corrigendum

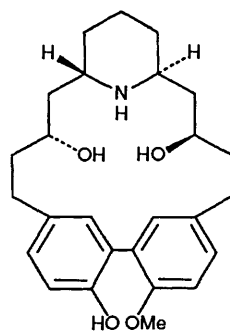
---

### Nitrene Cycloaddition: An Approach to the Cyclophane Alkaloid ( $\pm$ )-Lythranidine

W. Carruthers, P. Coggins and J. B. Weston

*J. Chem. Soc., Perkin Trans. 1*, 1991, 611

Page 611: right-hand column: *delete* formula 1 and *replace* by the following:



1 A Lythranidine

For a much-needed, molecular focus  
on the toxicological effects of chemical agents

# Chemical Research in Toxicology

Published bimonthly by the American Chemical Society

Editor: Lawrence J. Marnett  
Dept. of Biochemistry, Ctr. for Molecular Toxicology  
School of Medicine, Vanderbilt University  
Nashville, TN 37232-0146  
Phone: 615/343-7328; Fax: 615/343-7534

Associate Editors: Fred P. Guengerich  
Vanderbilt University  
Paul F. Hollenberg  
Wayne State University

Join your colleagues  
today!

In primary research reports,  
*Chemical Research in Toxicology*  
covers:

- Structure elucidation of novel toxic agents;
- Chemical and physical studies on chemical agents that provide insight into their mode or mechanism of action;
- Experimental and theoretical investigations of the interaction of toxic chemicals with biological macromolecules and other biological targets;
- A range of topics which includes toxicity, teratogenicity, mutagenicity, carcinogenicity, neurotoxicity, and immunotoxicity.

JANUARY/FEBRUARY 1991  
VOLUME 4 NUMBER 1

**Chemical  
Research in  
Toxicology**

PUBLISHED BY THE  
AMERICAN CHEMICAL SOCIETY

Here's what *Nature* says about this prestigious, essential resource for any scientist involved in toxicological research.

As would be expected of a journal of the American Chemical Society, it [*Chemical Research in Toxicology*] has been able to sustain publication of quality research papers, particularly in chemical analysis and reactive intermediates. The invited reviews and perspectives have been particularly well chosen and are of high quality.

Reprinted by permission from *Nature* Vol. 341 pp. 356  
Copyright © 1989 Macmillan Magazines Ltd.

Guided by an esteemed, international editorial advisory board,  
*Chemical Research in Toxicology* delivers peer-reviewed articles and invited reviews, communications and perspectives, such as these:

**Mechanism-Based Inactivation of Human Liver Microsomal Cytochrome P-450 IIIA4 by Gestodene.** F.P. Guengerich

**Laser Spectroscopic Studies of DNA Adduct Structure Types from Enantiomeric Diol Epoxides of Benzo[a]pyrene.** R. Jankowiak, Pei-qi Lu, G.J. Small and N.E. Geacintov

**Studies on 4-Benzyl-1-methyl-1,2,3,6-tetrahydropyridine, a Non-neurotoxic Analogue of the Parkinsonian Inducing Agent 1-Methyl-4-phenyl-1,2,3,6-tetrahydropyridine.** N. Naiman, H. Rolleman, E. Johnson and N. Castagnoli, Jr.

**Biochemical, Structural and Functional Properties of Oxidized Low Density Lipoprotein.** H. Esterbauer, G. Jürgens, M. Dieber-Rotheneder, G. Waeg and G. Striegler

**Molecular Recognition between Ligands and Nucleic Acids: Novel Pyridine- and Benzoxazole-Containing Agents Related to Hoechst 33258 that Exhibit Altered DNA Sequence Specificity Deduced from Footprinting Analysis and Spectroscopic Studies.** Y. Bathini, K.E. Rao, R.G. Shea, and J.W. Lown

## 1991 Subscription Information

*Chemical Research in Toxicology* is published by the American Chemical Society. One volume per year.  
Volume 4 (1991) ISSN 8093-228X

	U.S.	Canada and Mexico	Europe Service Included	Air Service	All Other Countries Air Service Included
ACS Members					
One Year	\$ 46	\$ 53	\$ 57		\$ 60
Two Years	\$ 82	\$ 96	\$ 104		\$ 110
Nonmembers	\$ 269	\$ 276	\$ 280		\$ 283

Call 1-800-227-5558 toll free in the U.S. and Canada, or 202-872-4363. FAX: 202-872-4615. TLX: 440159 ACSP UI or 89 2582 ACSPUBS. American Chemical Society, Sales and Distribution, 1155 Sixteenth Street, N.W., Washington, D.C. 20036

Please allow 45 days for receipt of first issue.

Member subscription rates are for personal use only. For nonmember rates in Japan, contact Maruten Co., Ltd. This publication is available on microfilm, microfiche, and online through CJO on STN International.